

Clutches for Rental Equipment



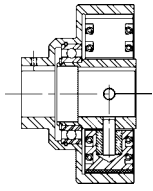
Centrifugal Clutch

Designed for concrete and plaster pumps, the Hilliard Centrifugal Clutch has a patent pending adjustable overload protection unit built in for gearboxes. Combine this feature with our dowel pin, vibration-dampening bushing system and you will have superior protection. Hilliard clutches incorporate load-free starting, adjustable overload protection and longer product life at an economical price. This clutch is a direct replacement for O.E.M. clutches used in Western Pump, Spray Force, and Putzmeister equipment.

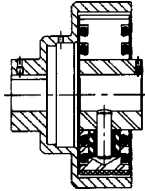


Hand Disconnect Clutch

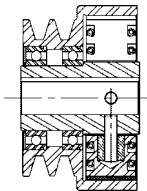
Ideal for most start and stop applications that require a positive-locking clutch. The operator can control the rate of engagement for smooth starts. The clutch mounts directly onto the input shaft and is held into engagement with the over center design. Used in Wisconsin Engines, Stone, Western Pump, Spray Force, Putzmeister, Multi Quip, and miscellaneous engine PTO drives. This unit is a replacement for the Rockford Clutch Model 4-09836 and Wisconsin Engine Clutch Model WC280B.



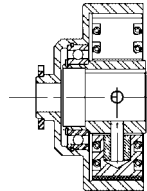
*Clutch Coupling
Type "C"*



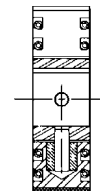
*Clutch Coupling
Type "T"*



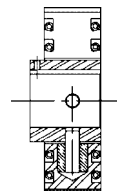
*Sheave Drum
Assembly
Type "P"*



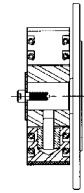
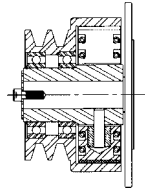
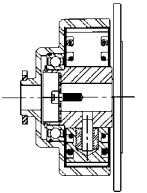
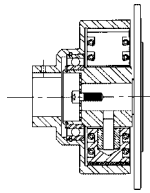
*Sprocket
Mounted
Drum
Assembly
Type "S"*



*Mechanism
Type "M"*



*Extended
Mechanism
Type "E"*



*Flange Adapters
Type "F"*

Linkless Centrifugal Clutch

Extreme-duty industrial design ideal for starting high inertia loads, and absorbing shock. Cushioned engagement enables quiet operation. Superior quality and longer life compared with O.E.M. clutches.

Common Applications

- Leaf Blowers
- Chippers/Shredders
- Power Concrete Saws
- Gas Engine-Driven Compressors
- Power Trowels
- Plate Tamps

Manufacturers Using Centrifugal Clutches

- Whitman Power Trowel
- Superior Power Trowel
- Stowe

The Hilliard Corporation
 100 West Fourth Street
 Elmira, New York 14902-1504
 Phone: 607/733-7121
 Fax: 607/737-1108
<http://www.hilliardcorp.com>

Local Representative:

