

HILCO Filter Cartridges for the GE Aftermarket



The Hilliard Corporation supplies genuine HILCO filter housings and filter cartridges to the General Electric Company (GE) on an original equipment manufacturer (OEM) basis. The filters and cartridges are used on lubricating oil, seal oil, hydraulic oil, and liquid fuel oil systems on gas turbines. On GE steam turbines, we supply filters and cartridges for the main lube oil system and the EHC/HPU conditioning system. Hilliard also supplies replacement parts in the GE aftermarket.

HILCO filter cartridges are also available to fit other manufacturers' filtration products. The following manufacturer's can be fitted with HILCO filter cartridges.

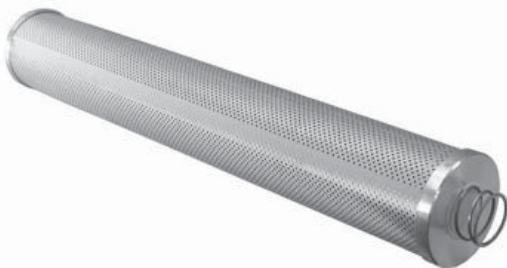
Pall

HILCO filter cartridge **HP311-12-GE** is a direct replacement for Pall part number HC9601FUP11YGE. This cartridge is used in both HILCO and Pall high pressure (1800 psi) hydraulic filters on a variety of GE gas turbines. The HP311-12-GE cartridge works with both HILCO or Pall filters, and is approved by GE. There are two cartridges per duplex filter arrangement. Note that a new cap assembly and gasket are required with the first fitting in older HILCO filters.



Parker

HILCO filter cartridge **PH528-05-CG1** is a direct replacement for Parker part number PMG528-10-GE. This cartridge is used in the main lube oil filter of a GE Frame 7FA gas turbine. There are nine cartridges used in each of the two filters, with a total of 18 cartridges per turbine. GE had quality problems with the Parker cartridges and asked Hilliard to design and supply replacements.



Dollinger

HILCO coalescer filter cartridges can be used in Dollinger oil mist eliminators that are used with GE Frame 7EA gas turbines. HILCO part number **DM1228-00-C** (five cartridges per mist eliminator) replaces Dollinger 95-121.

Also on the GE Frame 7EA gas turbine, look for HILCO filter cartridge PH718-01-CN (total 24 pieces in the duplex filter) in the main lube oil filter and in the liquid fuel filters (a total of 28 pieces in the duplex filter).



Kaydon

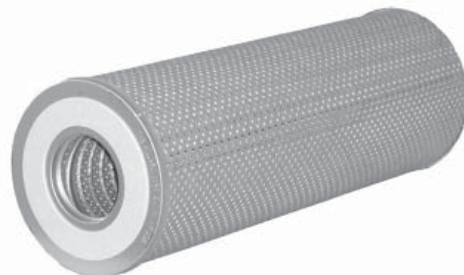
HILCO cartridges are used in Kaydon 30 GPM lube oil conditioners which remove water from the lube oil of GE steam turbines. HILCO coalescer cartridge **HC645-01-C** replaces Kaydon K-2000 (five cartridges per unit), and HILCO separator cartridge **HS629-200-C** replaces Kaydon K-3000 (three cartridges per unit).

Depending on the model, either HILCO filter cartridge **PH718-11-CGVGE** or **PH739-11-CG1VGE** can also be used in the HILCO main lube oil filters of the same GE steam turbine systems.



Alstom (GE, France)

On GE-type gas turbines manufactured in France, use HILCO filter cartridge **PL718-05-CNALS**. These cartridges replace Alstom filter cartridge 328A7132P001 in the main lube oil filter (24 cartridges per duplex filter).



The Hilliard Corporation

100 West Fourth Street
Elmira, New York 14902-1504
Phone: 607-733-7121
Fax: 607-733-0928
E-mail: hilliard@hilliardcorp.com
<http://www.hilliardcorp.com>

Your Local Representative:

