

# Hilco Bag Filter Housings



Hilco's Series H8 Bag Filter Housing removes pipe scale, dirt, and other contaminants from process liquids. Water, chemical, and petroleum products are common applications. Down-stream equipment is fully protected due to quality design and construction.

Constructed of carbon or 316 stainless steel, single vessel models are designed for operating up to 150 psi at 300° F. Particulate accumulates in a large sump area at the bottom of the basket. This design efficiently utilizes the bag filter and prolongs the life of the element. The 316 SS basket seals onto a viton o-ring to eliminate particulate bypass between the basket and the seat. Optional mesh-lined baskets and o-rings are also available.

To speed evacuation and filling, the H8 Housing was designed with a vent in the housing lid and a drain port. Gauge ports are also located on the housing to enable easy installation of gauges for monitoring differential pressure across the bag. Other design features include permanently piped housings that can be opened with simple tools without disruption of the piping. Hardware need not be removed due to swing bolts with eye nuts which allows easy opening and closing of the swing lid.

Housings with a standard finish are blast-cleaned and painted inside and out with a two-part epoxy. Stainless steel housings are satin-finished. Housings can be ASME Code construction compatible. Special design requirements are welcome.

## Features

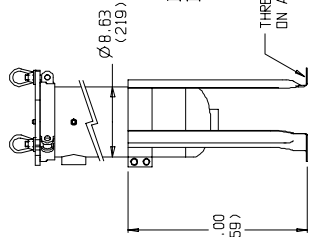
- O-ring sealed covers
- Swing bolt cover hardware
- Carbon steel or 316 stainless steel construction
- Available in duplex arrangement
- Suitable for a variety of inlet and outlet configurations
- Viton seals on lid and basket
- Differential, drain, and vent ports
- Two depths available: 15" and 30"

## Benefits

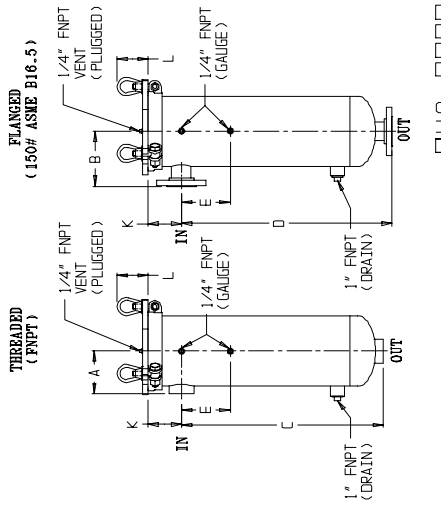
- Flow Rates to 220 gpm
- Designed to operate up to 150 psi at 300° F.
- Low Pressure Drop
- Adjustable Support Legs



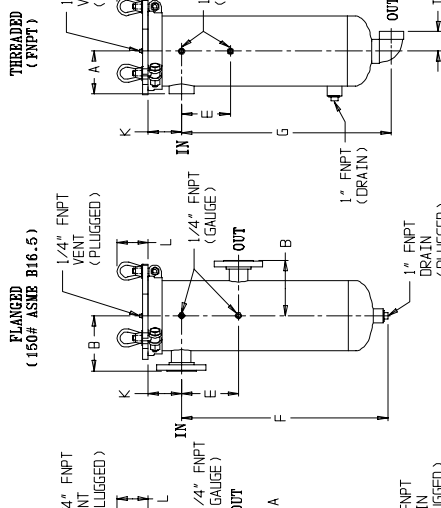
	CONN. SIZE	A	B	C	D	E	F	G	H	I	J	K	L1/2
BASKET SIZE 15" (#1)	2	5.25 (133)	6.75 (171)	24.75 (629)	25.88 (657)	7.00 (178)	25.63 (651)	26.19 (654)	26.19 (655)	2.38 (60)	5.59 (142)	4.12 (105)	3.81 (97)
	3	5.63 (143)	7.13 (181)	24.75 (629)	26.50 (673)	7.00 (178)	25.63 (651)	26.25 (667)	26.50 (673)	3.38 (86)	7.34 (186)	4.75 (121)	3.81 (97)
	4	5.63 (143)	7.13 (181)	24.75 (629)	26.63 (676)	7.00 (178)	25.63 (651)	26.88 (683)	29.13 (740)	4.19 (106)	7.12 (181)	5.38 (137)	3.81 (97)
	2	5.25 (133)	6.75 (171)	36.19 (919)	37.38 (949)	7.00 (178)	37.06 (941)	37.19 (945)	37.75 (959)	2.38 (60)	5.59 (142)	4.12 (105)	3.81 (97)
BASKET SIZE 30" (#2)	3	5.63 (143)	7.13 (181)	36.19 (919)	38.00 (965)	7.00 (178)	37.06 (941)	38.19 (984)	38.19 (985)	3.38 (86)	7.34 (186)	4.75 (121)	3.81 (97)
	4	5.63 (143)	7.13 (181)	36.19 (919)	38.13 (969)	7.00 (178)	37.06 (941)	38.88 (987)	40.63 (1032)	4.19 (106)	7.12 (181)	5.38 (137)	3.81 (97)



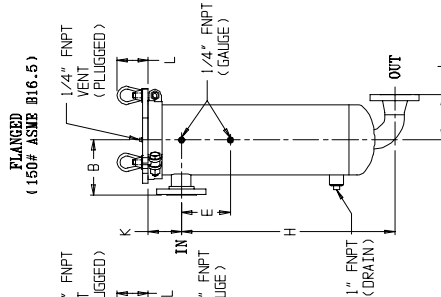
**STYLE A**



**STYLE B**



**STYLE C**



- NOTES:**
- 1 - MAXIMUM WORKING PRESSURE: 150 PSI (10.3 BAR)
  - 2 - MAXIMUM WORKING TEMPERATURE: 300°F (149°C)
  - 3 - SEE PART NUMBER CHART FOR DURING MATERIAL LIMITATIONS.
  - 4 - MVA DESIGN METAL TEMPERATURE: CARBON STEEL: 20°F AT 150 PSI. 516 S.S.: 20°F AT 150 PSI.
  - 5 - HYDROJETS: PRESSURE: 195 PSI (13.4 BAR)
  - 6 - SEE Z501-00-249-A FOR OPERATING INSTRUCTIONS.
  - 7 - BOLT HOLES STRADDLE CENTERLINES ON ALL FLANGES.
  - 8 - BOLLING FINISH IS 125-250 AARH PER ANSI B46.1.
  - 9 - BASKET MATERIAL: 316/316L
  - 10 - \* DENOTES STANDARD FEATURE.

- MATERIAL / DESIGN CODE**
- 1 - CARBON STEEL, STANDARD CONSTRUCTION
  - 2 - CARBON STEEL, ASME CODE STAMPED
  - 3 - 316/316L SS, STANDARD CONSTRUCTION
  - 4 - 316/316L SS, ASME CODE STAMPED
- BASKET SIZE**
- 1 - 15" (#1)
  - 2 - 30" (#2)
- STYLE**
- A - BOTTOM OUTLET
  - B - SIDE OUTLET
  - C - BOTTOM OUTLET 90°
- CONNECTION SIZE**
- 2 - 2"
  - 3 - 3"
  - 4 - 4"
- CONNECTION TYPE**
- N - NPT
  - F - FLANGED
- BASKET PERFORATION OPTION**
- 0 - 9/64" DIAMETER \*
  - 1 - 1/4" DIAMETER
  - 2 - 3/16" DIAMETER
  - 3 - 3/32" DIAMETER
  - 4 - 1/16" DIAMETER
- PAINT TYPE**
- 0 - NO PAINT
  - 1 - STANDARD EPOXY (GRAY)
- "D"-RING MATERIAL**
- B - BUNA-N (250°F MAX.) \*
  - E - ETHYLENE PROPYLENE
  - V - VITON

THIS DOCUMENT CONTAINS PROPRIETARY INFORMATION AND SUCH INFORMATION MAY NOT BE DISCLOSED TO OTHERS OR USED FOR ANY PURPOSE WITHOUT WRITTEN PERMISSION FROM THE HILLIARD CORP. COPYRIGHT 2002. THE HILLIARD CORPORATION ALL RIGHTS RESERVED.

**The Hilliard Corporation**  
 100 West Fourth Street  
 Elmira, New York 14902-1504  
 Phone: 607/733-7121  
 Fax: 607/737-1108  
<http://www.hilliardcorp.com>

**Your Local Representative:**

