

PRODUCT INFORMATION



HILCOSEP™ Hilco Coalescer Separator

Purpose:

The **HILCOSEP** was designed to remove moisture and particulate contamination from Turbine Lube Oil using the principles of filtration and coalescing/separation.

Benefits:

- Extends turbine oil life
- Reduces maintenance
- Increases bearing life
- Easy operation
- Economically priced
- Protects system's components from corrosion

Features:

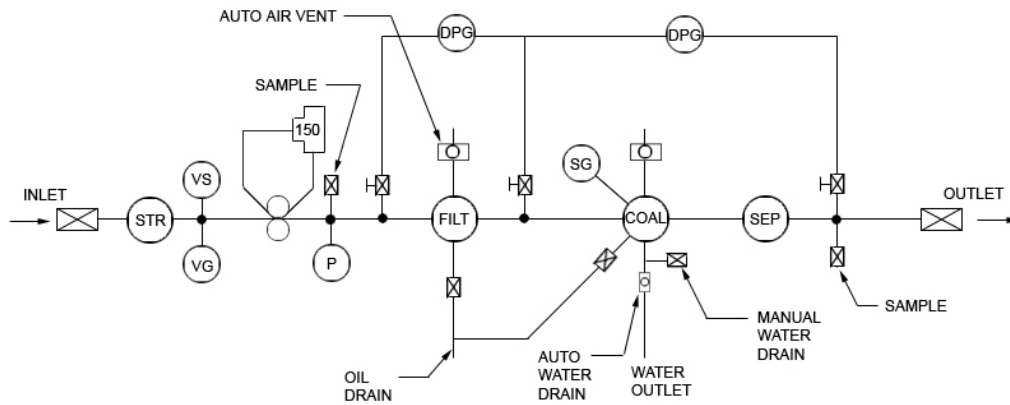
- Compact design
- ASME Code vessel design
- Highly efficient pre-filter
- Clean and dirty sampling ports
- Basket strainer protects pump
- Differential pressure switch and gauge
- Sight glass for visual examination
- Automatic float and water discharge valve for continuous operation
- CSA (Canadian Standards Assoc.) approval available
- Swing bolt cover design allows for easy element changeout

Performance:

- Contamination removal – The **HILCOSEP** removes particulates using a $B_6=200$ pleated polyester cartridge. Ratings were established by Multipass Test ISO 4572. Element is 99.5% efficient.
- Water Removal – The **HILCOSEP** removes free and emulsified water to less than 25 PPM and reduces total water content to less than 150 PPM.
- Tested on four major brands of turbine lube oil
- Results based on an influent with 5000 PPM water
- Lab services available



Flow Diagram



Description of Operation

Turbine oil is pumped from the main lube oil reservoir through the Hilco purification system.

The oil passes through a cleanable strainer, which provides primary protection for the gear pump. The cleanliness of the strainer is monitored by a vacuum gauge. The system is shut down by a vacuum switch if the strainer becomes contaminated. The pump is furnished with a relief valve set at 150 PSI.

A Hilco filter containing two highly efficient cartridges removes particulates which may be present in the oil, far exceeding the cleanliness levels provided by the main lube oil filters. The oil passes through a coalescing/separation vessel, which removes the moisture contamination present in the oil. As water is accumulated in this vessel, it is automatically drained through a water discharge valve. A clean oil sampling port is provided in the outlet of the system to monitor overall effectiveness.

Specifications

	10 GPM	30 GPM
DIMENSIONS	48" x 48" x 96"	66" x 66" x 96"
WEIGHT		
DRY	2000 LBS.	2800 LBS.
WET	3350 LBS.	5050 LBS.
FLUID CAPACITY	180 GALLONS	300 GALLONS
VOLTAGE	460/60/3	460/60/3
FLOW RATE	10 GPM	30 GPM
INLET SIZE	1"	1-1/2"
OUTLET SIZE	1"	1-1/2"
COALESCER	HC628-01-C	HC628-01-C
SEPARATOR	HS611-200-C1	HS611-200-C1
PREFILTER	PH718-12-CN	PH718-12-CN

The Hilliard Corporation

100 West Fourth Street
 Elmira, New York 14902-1504
 Phone: 607-733-7121
 Fax: 607-733-0928
<http://www.hilliardcorp.com>

Your Local Representative:

