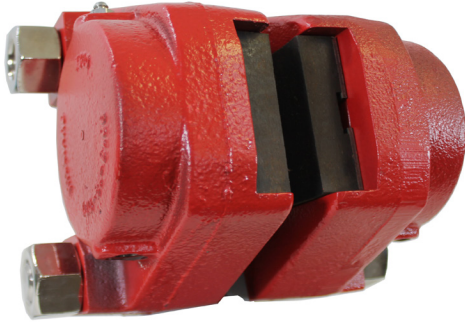




Hilliard® Brake Model 300H

Technical Data Sheet



M300H Brake Caliper

The Hilliard M300 brake caliper is a hydraulic applied, spring retracted brake caliper for use in heavy duty industrial applications. The brake caliper is suitable for outdoor applications and has been designed for use in many different extreme environments.

The M300 brake caliper is capable of producing a maximum 10,600 LBF (47 kN) of braking force at 1600 PSI (110 Bar) and has been designed for use in static or dynamic applications. Static applications can have up to a 50% reduction in braking force.

M300 H A AA

MODULAR SIZE

VERSIONS

H = HYDRAULICALLY APPLIED

PADS

A = Standard

SPECIAL

REQUIREMENTS

AA = Standard Finish Red Powder Coat

Braking Force: 10,600 lbf @ 1,600 psi / (47 Kn @ 1,600 psi)

Minimum Disc Size: 12 in (304.8 mm) • Minimum Disc Thickness 1/2 in (12.7 mm)

Braking Torque (lb-ft) = $884 \times (\text{Disc Radius (in)} - 1.8 \text{ in})$ at maximum operating pressure

Brake Weight: 46 lb (20.8 kg)

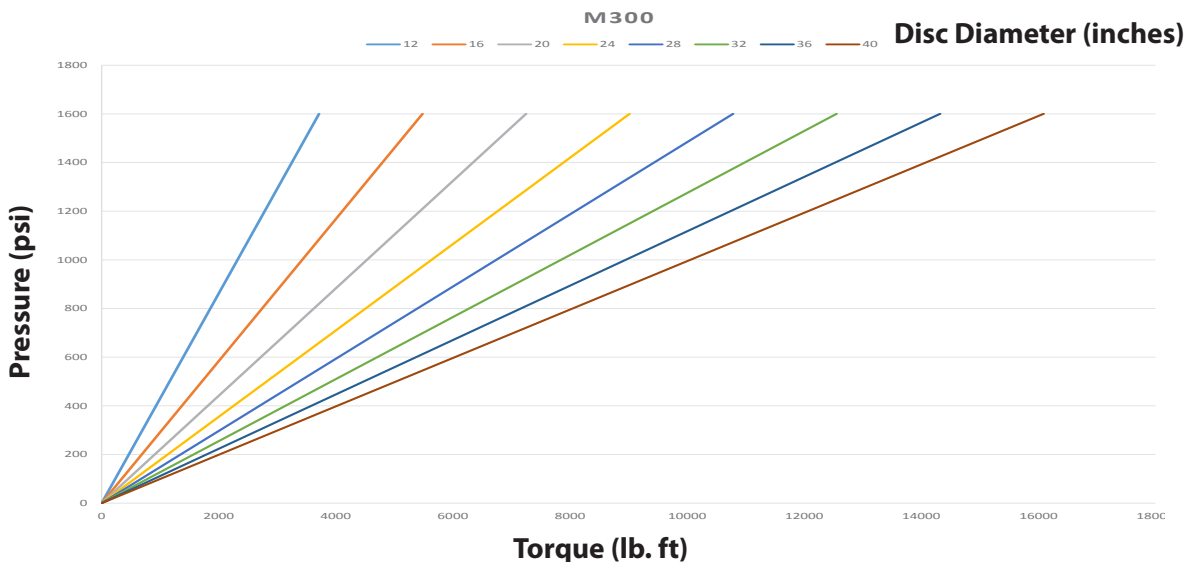
Brake Path: 4.125 in (104 mm)

Friction Pad Area: 10.9 in² [70 cm²] (Each Pad)

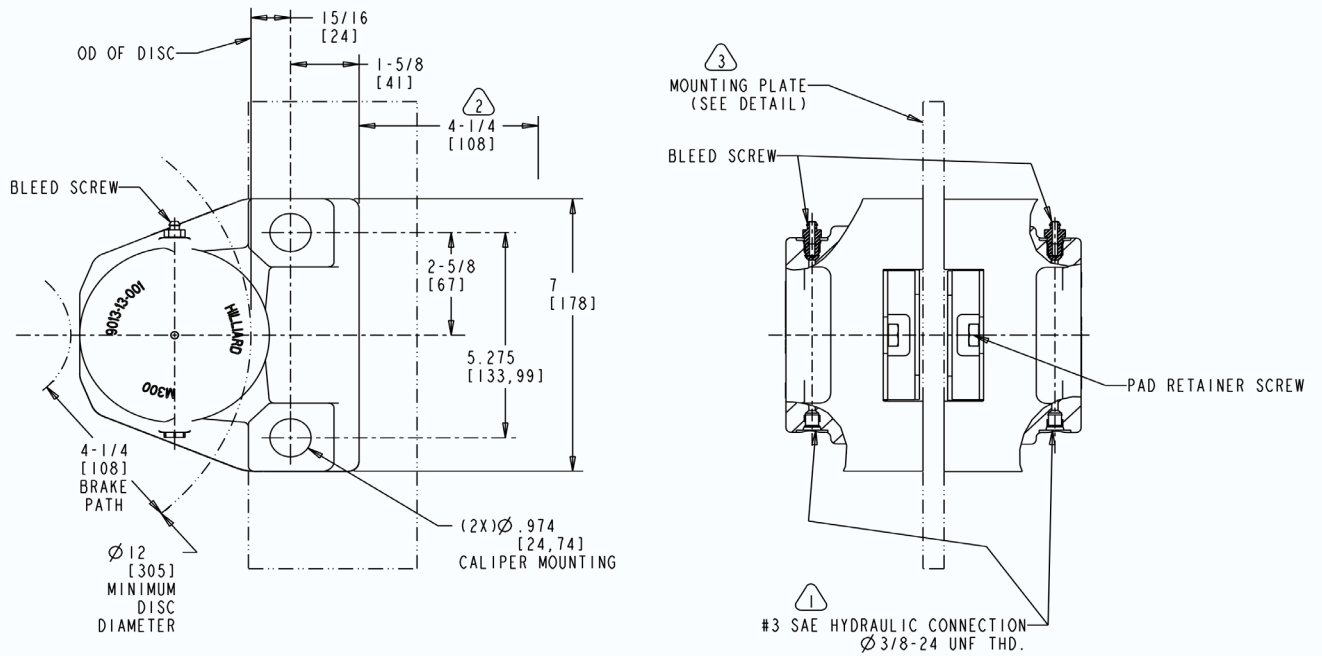
Oil Volume: .25 in.³

Recommended Oil

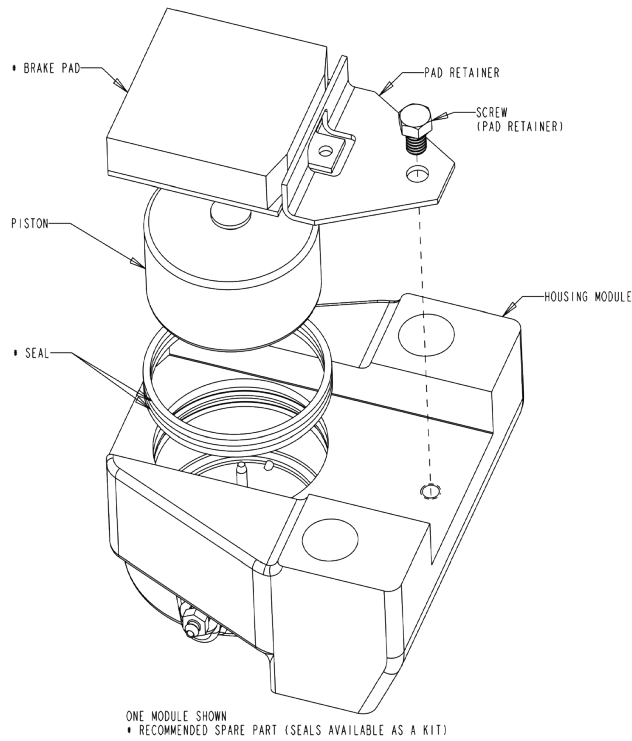
Mineral Oil or Automatic Transmission Fluid (ATF) is recommended for use with the M300H brake caliper. Do not use automotive brake fluid as this will cause seal failure.



Mounting Dimensions



M300H Exploded View



The Hilliard Corporation
 100 West 4th St.
 Elmira, NY 14902-1504 USA www.hilliardcorp.com
 PH: 607-733-7121 FAX: 607-737-1108
www.hilliardbrakesystems.com
hilliard@hilliardcorp.com



YOUR LOCAL REPRESENTATIVE:



08/18 TDS-M300H