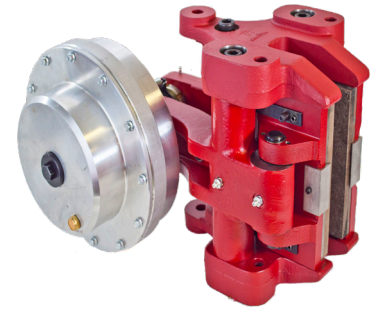


Spring Applied, Pneumatically Released Caliper Brakes



A400-T300 SA / A400-T400 SA Brake Calipers

The A400 is an arm style caliper brake designed to accept a large selection of Hilliard thrusters. These thrusters include spring applied hydraulic released, spring applied pneumatic released, hydraulic applied spring released, and pneumatic applied spring released. The 400 requires a minimum disc diameter of 24" and is offered in 2 sizes to accommodate a 1" and 1-1/2" thick disc. The design of the caliper allows the user to quickly convert between right and left handed designs eliminating the need for multiple part numbers.

The SA thruster is a failsafe thruster that is spring applied pneumatically released. The spring applied thrusters are offered in multiple sizes to meet the needs of our customers.

The T300 SA thruster produces a maximum braking force of 5580 pounds at the maximum operating pressure of 88 psi with a maximum pressure of 110 psi when used with the A400 caliper.

The T400 SA thruster produces a maximum braking force of 8366 pounds at the maximum operating pressure of 81 psi with a maximum pressure of 106 psi. (This thruster is only to be used on the A400 caliper)

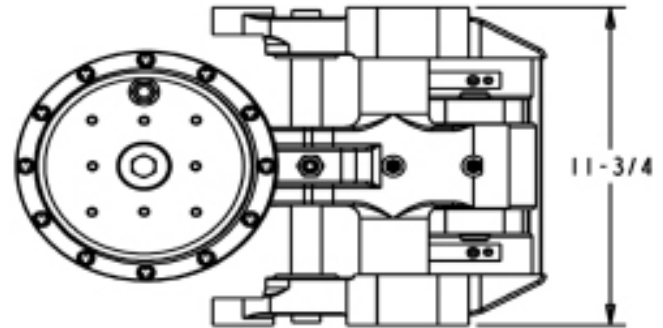
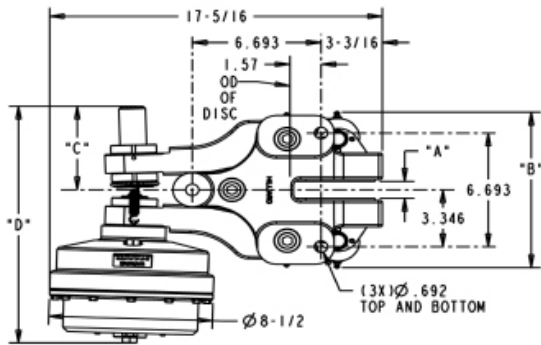
A400 Caliper T300SA Thruster Specifications:

Total Brake Weight: 131 lbs. (59.4 kg)
Caliper Weight: 108 lbs. (49 kg)
Thruster Weight: 23 lbs. (10.4 kg)
Air Volume: 45.5 in.³
Friction Pad Area: 60.2 SQ. IN.
[388.4 SQ Cm]
Brake path: 4.625 in. (117mm)

A400 Caliper T400SA Thruster Specifications:

Total Brake Weight: 138 lbs. (62.6kg)
Caliper Weight: 108 lbs. (49 kg)
Thruster Weight: 30 lbs. (13.6 kg)
Air Volume: 73.8 in.³
Friction Pad Area: 60.2 SQ. IN.
[388.4 SQ Cm]
Brake Path: 4.625 in (117mm)

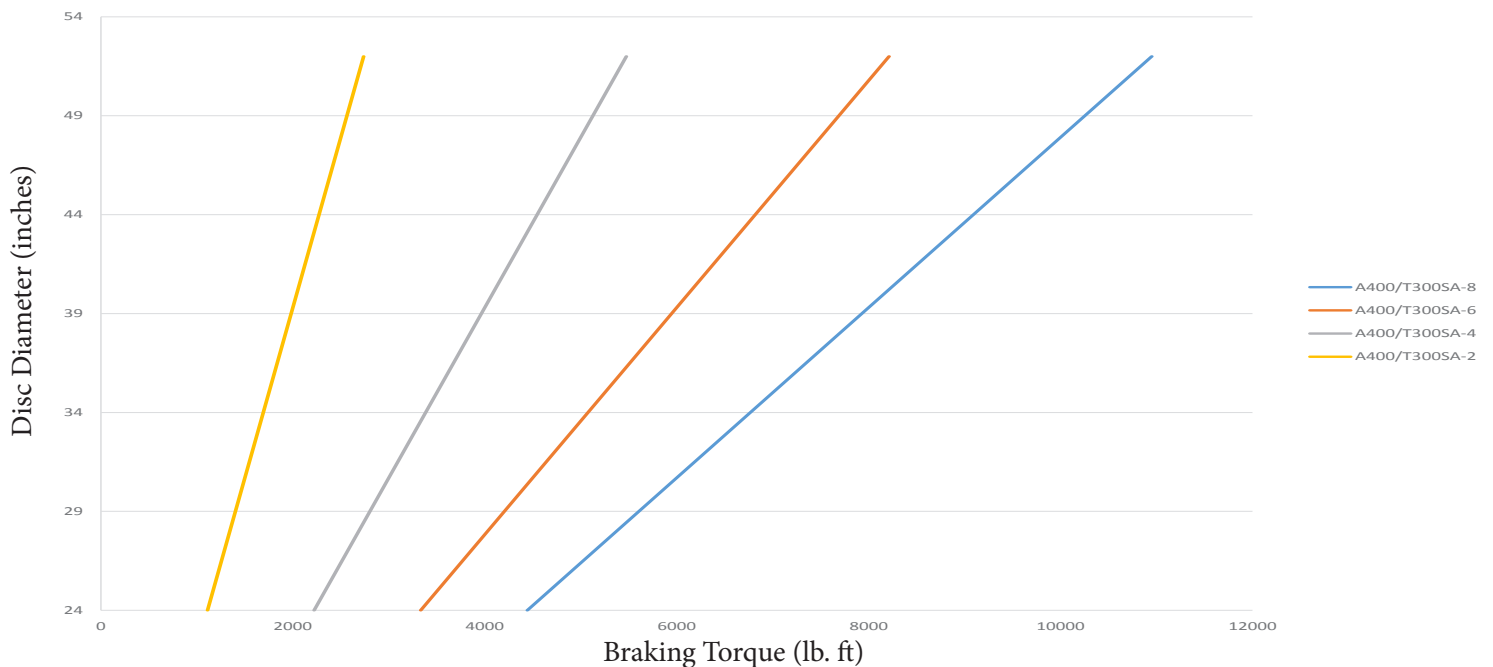
A400 CALIPER WITH T300 SA THRUSTER				
Caliper Model	"A" Disc Thickness	"B"	"C"	"D"
A400-25	1"	9- 5/32"	5"	13- 15/16"
A400-40	1- 1/2"	9- 13/16"	5"	14"



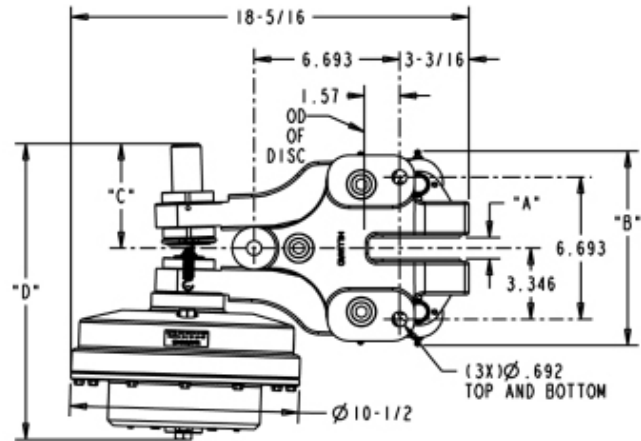
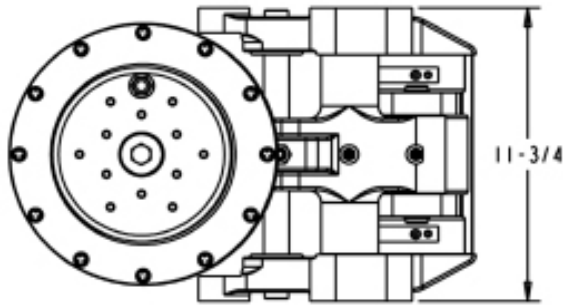
Maximum Pressure: 110 psi

SPRING APPLIED / PNEUMATIC RELEASE T300SA THRUSTER A400 CALIPER			
THRUSTER Model	Retract Pressure	Operating Pressure	Braking Torque
T300SA-8-AA	88 psi/ 6.1 Bar	110 psi/ 7.6 Bar	465 * (Disc Radius(in)-2.44)
T300SA-6-AA	66 psi/ 4.6 Bar	83 psi/ 5.7 Bar	349 * (Disc Radius(in)-2.44)
T300SA-4-AA	44 psi/ 3.1 Bar	55 psi/ 3.8 Bar	232* (Disc Radius(in)-2.44)
T300SA-2-AA	22 psi/ 1.5 Bar	28 psi/ 1.9 Bar	116* (Disc Radius(in)-2.44)

A400-T300SA



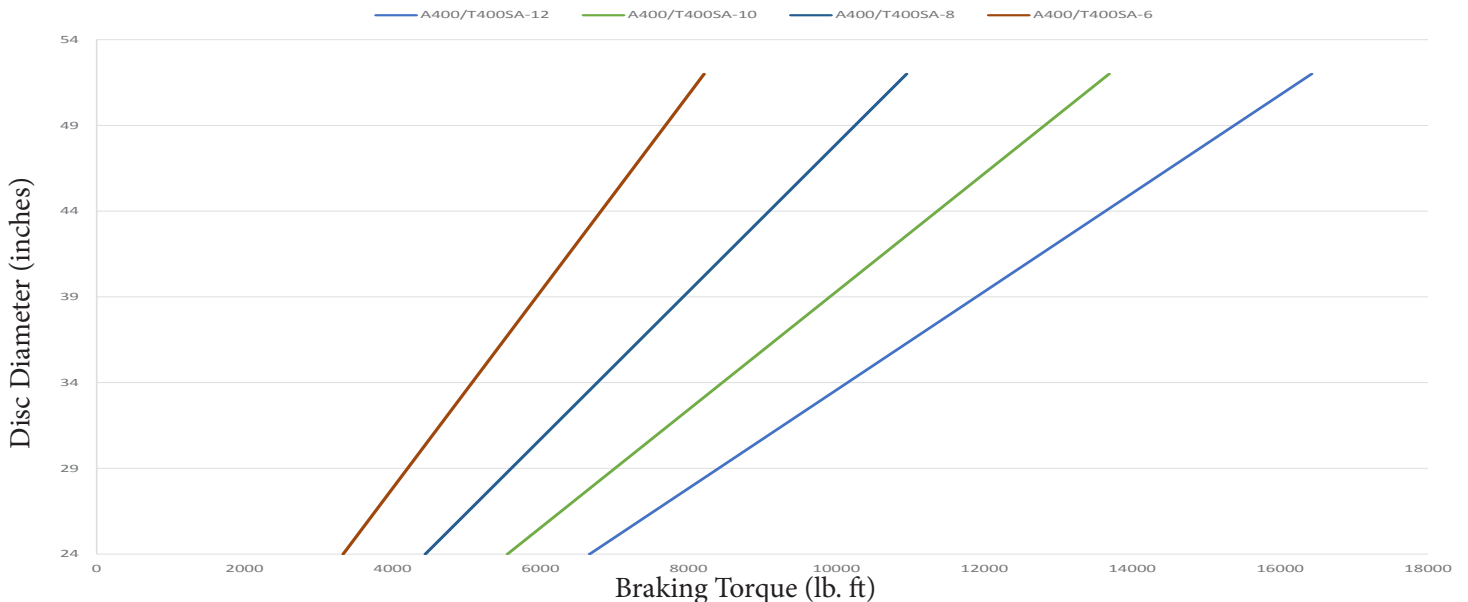
A400 CALIPER WITH T400 SA THRUSTER				
Caliper Model	"A" Disc Thickness	"B"	"C"	"D"
A400-25	1"	9- 5/32"	5"	13- 15/16"
A400-40	1- 1/2"	9- 13/16"	5"	14"



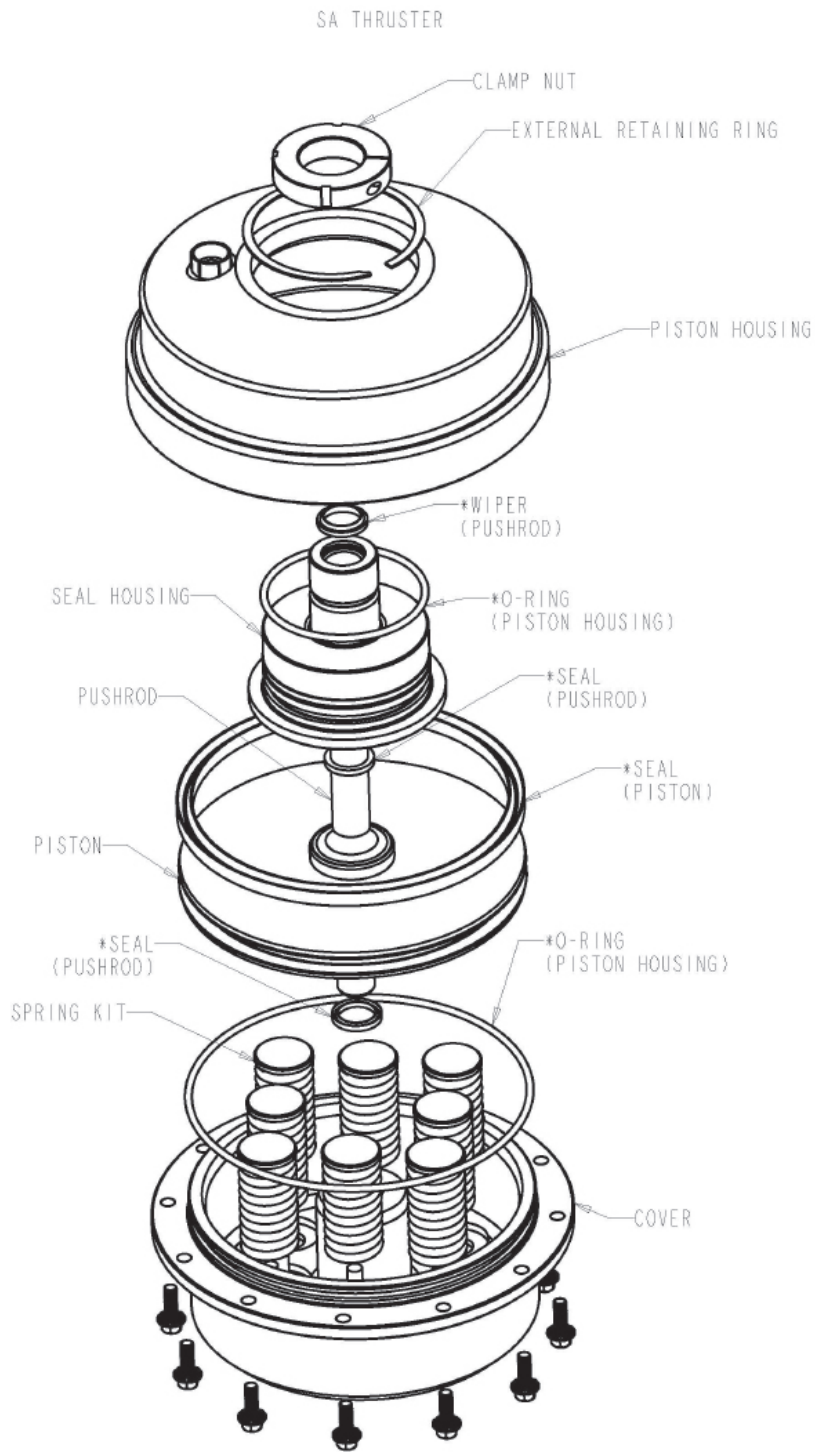
Maximum Pressure: 120 psi

SPRING APPLIED / PNEUMATIC RELEASE T400SA THRUSTER A400 CALIPER			
THRUSTER Model	Retract Pressure	Operating Pressure	Braking Torque
T400SA-12-AA	85 psi/ 5.9 Bar	120 psi/ 8.3 Bar	697*(Disc Radius(in)-2.44)
T400SA-10-AA	70 psi/ 4.8 Bar	88 psi/ 6.1 Bar	581*(Disc Radius(in)-2.44)
T400SA-8-AA	47 psi/ 3.3 Bar	56 psi/ 4.1 Bar	465*(Disc Radius(in)-2.44)
T400SA-6-AA	23 psi/ 1.6 Bar	29 psi/ 2.0 Bar	349*(Disc Radius(in)-2.44)

A400-T400SA



SA Thruster: Spring Applied / Pneumatically Released



* RECOMMENDED SPARE PART (SEALS & O-RINGS AVAILABLE AS A KIT)

The Hilliard Corporation
100 West 4th St.
Elmira, NY 14902-1504 USA
PH: 607-733-7121 FAX: 607-737-1108
www.hilliardbrakesystems.com
hilliard@hilliardcorp.com



YOUR LOCAL REPRESENTATIVE:



08/18 TDS-A400-T300 & 400 SA